

**Government Fiscal Sustainability
Workgroup:
U.S. Infrastructure Conditions & Future
Outlook**

Kristina Swallow, PE
Chair, Committee on America's Infrastructure

May 3, 2023



2021 REPORT CARD
FOR AMERICA'S INFRASTRUCTURE
ASCE

Report Card Methodology

CAPACITY

OPERATION AND MAINTENANCE

CONDITION

PUBLIC SAFETY

FUNDING

RESILIENCE

FUTURE NEED

INNOVATION

2021 Infrastructure Grades

 AVIATION  D+

 BRIDGES  C

 DAMS D

 DRINKING WATER  C-

 ENERGY  C-

 HAZARDOUS WASTE D+

 INLAND WATERWAYS  D+

 LEVEES D

 PARKS AND RECREATION D+

 PORTS  B-

 RAIL B

 ROADS D

 SCHOOLS D+

 SOLID WASTE C+

 STORM WATER D

 TRANSIT D-

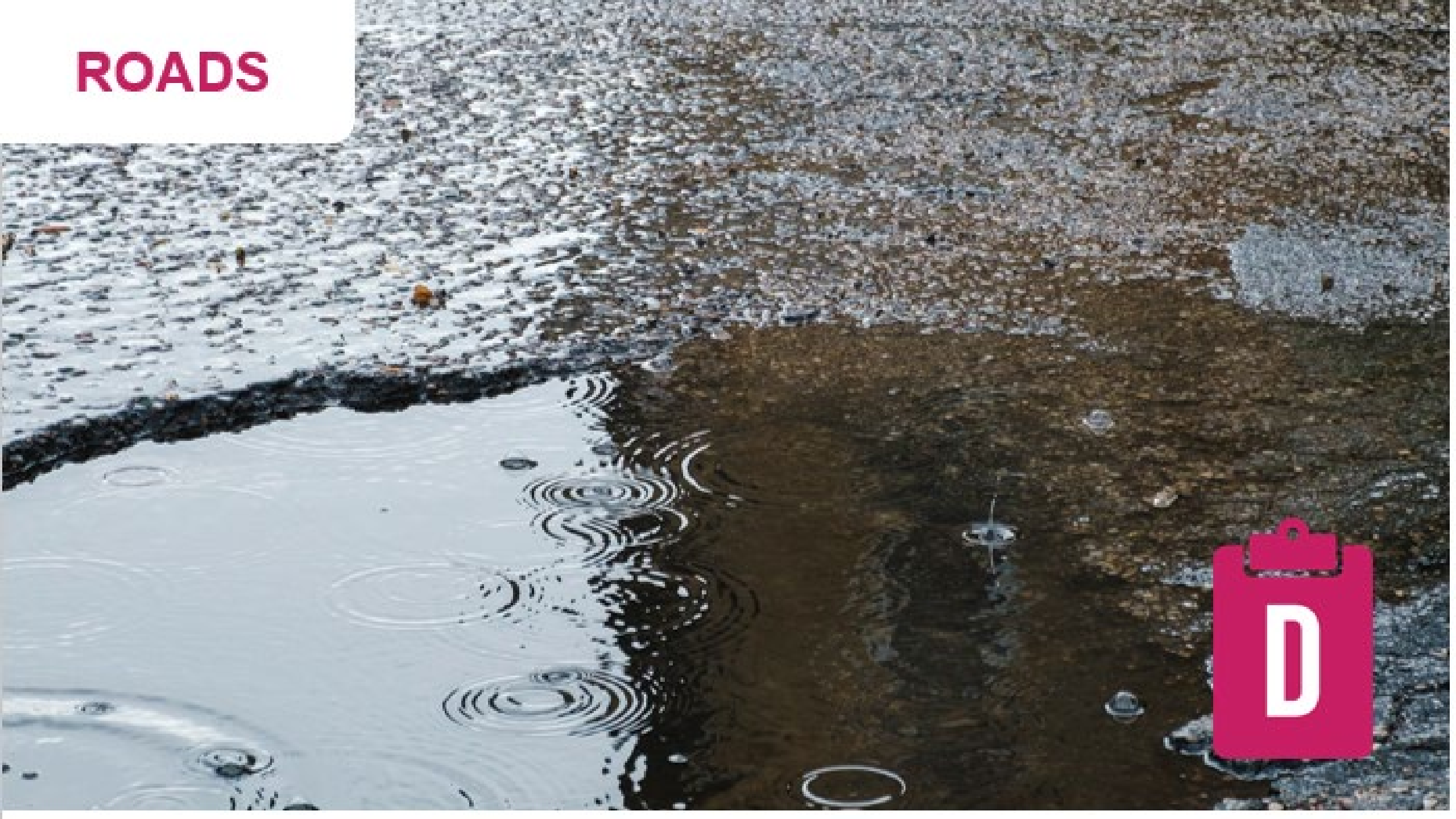
 WASTEWATER D+

America's
Cumulative
Infrastructure
Grade



A	EXCEPTIONAL
B	GOOD
C	MEDIOCRE
D	POOR
F	FAILING

ROADS



BRIDGES





Trends

1. Maintenance backlogs continue to be an issue, but asset management helps prioritize limited funding.
2. Federal investments have moved the needle, and many state and local governments continue to prioritize infrastructure investments to help us keep pace with our growing needs.
3. There are still infrastructure sectors where data is scarce or unreliable.

FAILURE TO ACT

Economic Impacts of Status Quo
Investment Across Infrastructure Systems

Our report finds that the over the next 20 years, **the average American household will spend \$3,300 a year** due to infrastructure deficiencies. This lost disposable income comes from the disruptions of inadequate infrastructure **like sitting in traffic, hitting a pothole, power outages, and water main breaks.**

The average AMERICAN HOUSEHOLD LOSES \$63 A WEEK due to CHRONIC UNDERINVESTMENT in infrastructure. What could you buy with \$63 a week, or \$275 a month?



TAKEOUT DINNER
FOR A FAMILY OF
FOUR EACH WEEK.



STARTING
A COLLEGE
FUND.



DOING A
HOME RENOVATION
PROJECT.

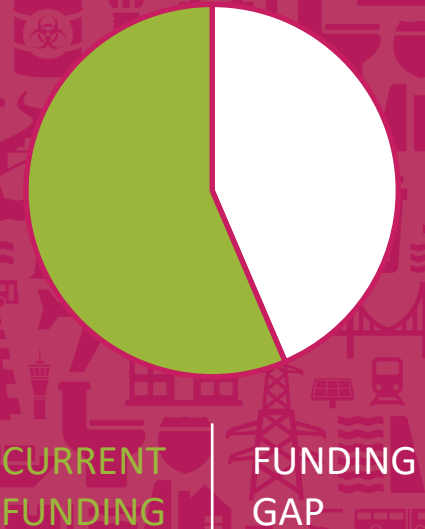
FAILURE TO ACT

Economic Impacts of Status Quo
Investment Across Infrastructure Systems

Investment Needs

Category	Total Needs	Funded	Funding Gap
SURFACE TRANSPORTATION¹	\$2,834	\$1,619	\$1,215
WATER/ WASTEWATER/ STORMWATER ²	\$1,045	\$611	\$434
ELECTRICITY ²	\$637	\$440	\$197
AIRPORTS ²	\$237	\$126	\$111
INLAND WATERWAYS & MARINE PORTS ²	\$42	\$17	\$25
DAMS ³	\$93.6	\$12.5	\$81
HAZARDOUS & SOLID WASTE ⁴	\$21	\$14.4	\$7
LEVEES ⁵	\$80	\$10.1	\$70
PUBLIC PARKS & RECREATION ⁶	\$77.5	\$9.5	\$68
SCHOOLS ⁷	\$870	\$490	\$380
TOTALS	\$5,937	\$3,350	\$2,588

\$2.59
Trillion
needed



Infrastructure Investment & Jobs Act Overview



\$1.2 trillion investment



Invests in all 17 Report Card categories



Addresses 43 Report Card recommendations

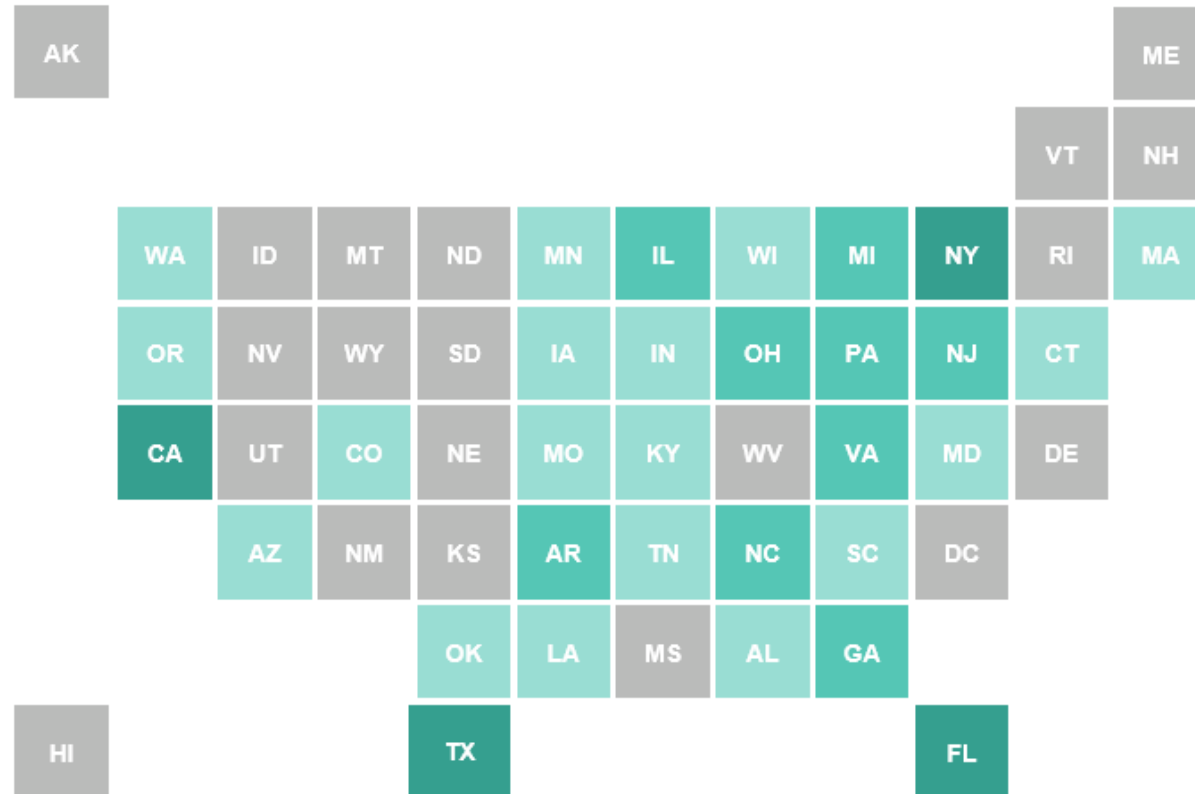


\$47 billion investment in resilient infrastructure



Total Estimated Infrastructure bill allocations by state

■ < \$5 Billion ■ \$5 Billion - \$10 Billion ■ \$10 Billion - \$20 Billion ■ > \$20 Billion



STATE RANK

- | | |
|--------------------------------|------------------------------|
| 1. California: \$44.56B | 27. Connecticut: \$6.04B |
| 2. Texas: \$35.44B | 28. Oklahoma: \$5.77 |
| 3. New York: \$26.92B | 29. Oregon: \$5.36B |
| 4. Florida: \$19.1B | 30. Iowa: \$5.08B |
| 5. Illinois: \$17.81B | 31. Arkansas: \$4.93B |
| 6. Pennsylvania: \$17.8B | 32. Alaska: \$4.93B |
| 7. New Jersey: \$13.51B | 33. Mississippi: \$4.46B |
| 8. Ohio: \$12.83B | 34. West Virginia: \$4.4B |
| 9. Georgia: \$12.34B | 35. Nevada: \$4.04B |
| 10. Michigan: \$10.78B | 36. Utah: \$3.96B |
| 11. North Carolina: \$10.4B | 37. Montana: \$3.86B |
| 12. Virginia: \$10.1B | 38. Kansas: \$3.84B |
| 13. Massachusetts: \$9.33B | 39. New Mexico: \$3.73B |
| 14. Missouri: \$9.01B | 40. Nebraska: \$3.04B |
| 15. Indiana: \$8.84B | 41. Idaho: \$3.03B |
| 16. Washington: \$8.59B | 42. Washington D.C.: \$3.01B |
| 17. Tennessee: \$7.96B | 43. South Dakota: \$2.85B |
| 18. Maryland: \$7.4B | 44. North Dakota: \$2.64B |
| 19. Arizona: \$7.31B | 45. Hawaii: \$2.62B |
| 20. Wisconsin: \$7.27B | 46. Wyoming: \$2.58B |
| 21. Louisiana: \$7.25B | 47. Rhode Island: \$2.57B |
| 22. Alabama: \$6.97B | 48. Delaware: \$2.38B |
| 23. Minnesota: \$6.8B | 49. Maine: \$2.37B |
| 24. Kentucky: \$6.49B | 50. Vermont: \$2.22B |
| 25. Colorado: \$6.178 | 51. New Hampshire: \$2.05B |
| 26. South Carolina: \$6.11B | |

IIJA Progress Report: Dollars Out the Door

as of March 14, 2023

Category	Approx. Funding to Date	Total Amount (over 5 yrs)
Bridges & Roads	\$128 billion	\$350 billion
Drinking Water, Wastewater & Stormwater (SRF funds)	\$8.8 billion	\$44 billion
Inland Waterways & Ports	\$3.7 billion	\$17 billion
Airports	\$5.92 billion	\$25 billion
Rail		\$66 billion
Transit	\$3.1 billion (not including CIG)	\$92 billion
Broadband	\$5 billion	\$65 billion
Resilience, Energy, MISC	~\$17.9 billion	\$153 billion

IIJA Progress – Major Projects

- Sault Sainte Marie, Michigan, \$478.9M for Replacement Lock
- Houma, Louisiana, \$378.5M for waterway management
- Douglas, Arizona, \$200M for new dedicated commercial border crossing
- San Francisco, California, \$400M for Seismic Retrofit of Golden Gate Bridge

What's next?

www.infrastructurereportcard.org | reportcard@asce.org



2021 REPORT CARD
FOR AMERICA'S INFRASTRUCTURE
ASCE